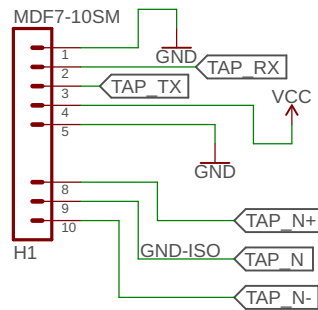
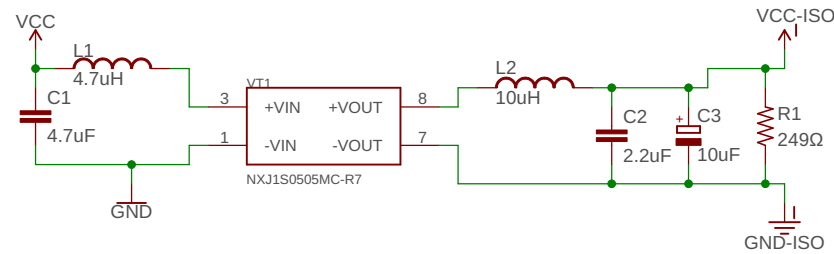


PCB Interface



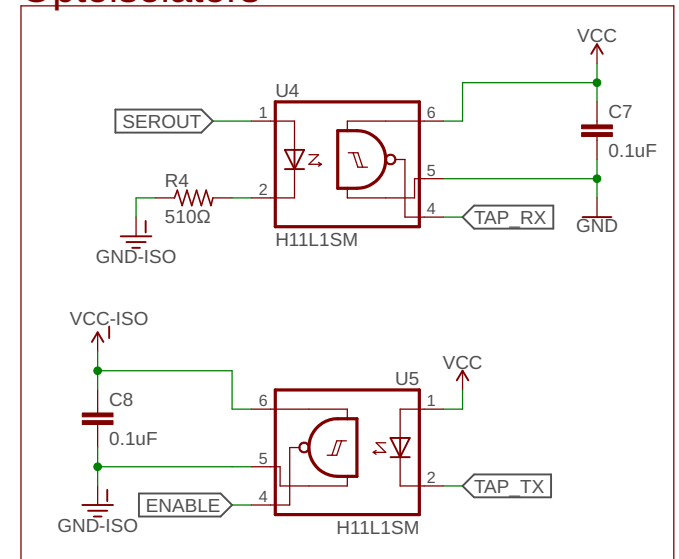
Isolated DC-DC



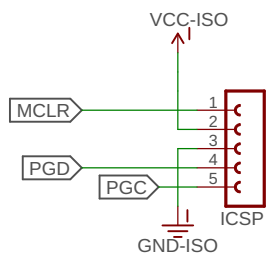
PIC16F1825



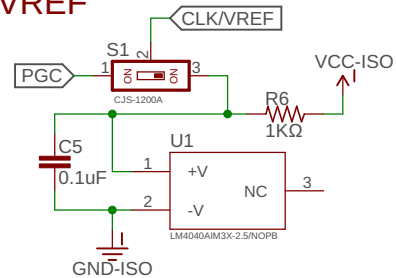
Optoisolators



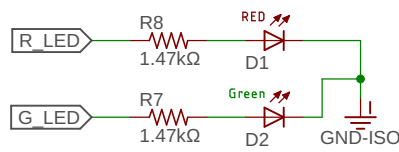
ICSP



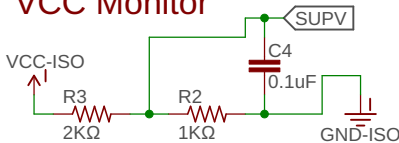
VREF



LED



VCC Monitor



BCM Replacer-C Tap Module V1.6

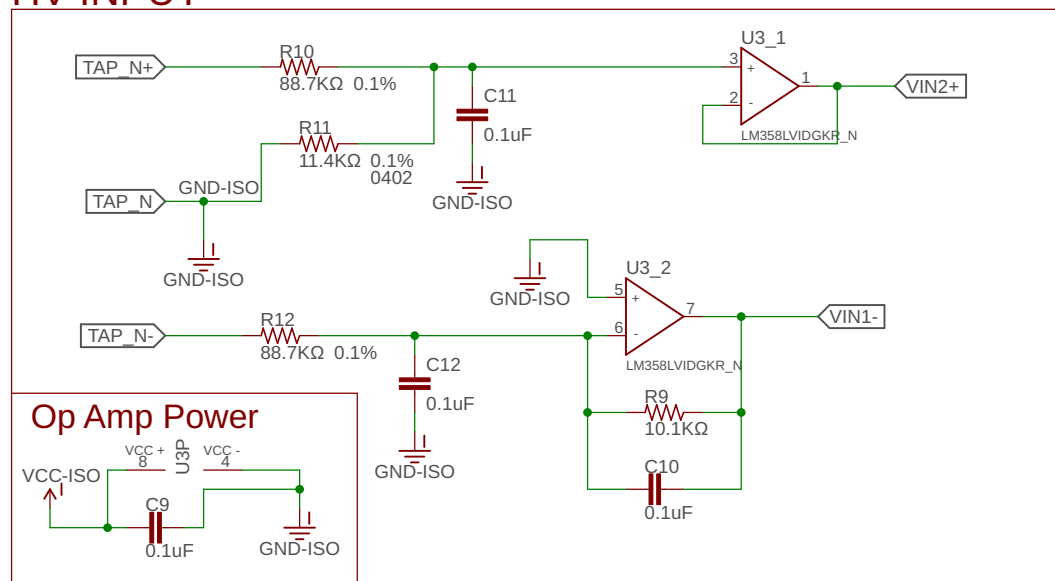
6/10/2019 1:34 PM

Peter Perkins & Isaac Reedy

Sheet: 1/2

Rev: Prototype v1.5

HV INPUT



BCM Replacer-C Tap Module V1.6

6/10/2019 1:34 PM

Peter Perkins & Isaac Reedy

Sheet: 2/2

Rev: Prototype v1.5